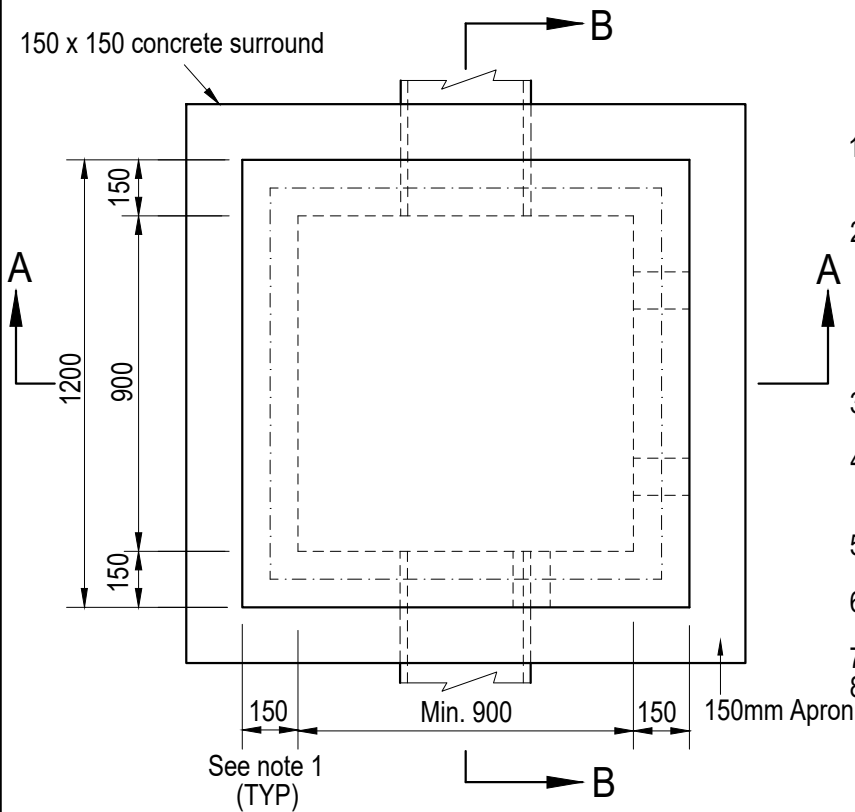


SECTION A-A

SECTION B-B



PLAN

NOTES

1. For depth of invert greater than 1.2m, min. wall & base thickness to be 200mm.
2. Internal pit dimension = greater of 900mm or external pipe dia. + 150mm. For pipe dia. greater than 675mm corbel pit top to a min. of 900mm. Refer SD231 for corbelled pit structural details.
3. SL82 reinforcing is required for pits greater than 1200 depth.
4. Class 'D' 900 x 900 clear opening concrete/asphalt infill ductile iron cover or equivalent as per AS3996.
5. Concrete strength shall be 25MPa at 28 days.
6. Where no AG pipes exist, seal stubs with Geofabric.
7. Precast pits only as approved
8. Step Irons, 230 x 230 x 20mm dia plastic coated, to be provided in pits over 900mm deep. Steps Irons to be installed on INLET wall only.



SCALE: 1 : 20

DATE: Dec 2025

APPROVED:

DRAWN: R.J.

CHECKED: T.T.

Addy.

MANAGER ENGINEERING SERVICES

LAST AMENDED:

Jan 2026

**JUNCTION PIT
TRAFFICABLE AREA**

SD 215A

PAGE 1 OF 1