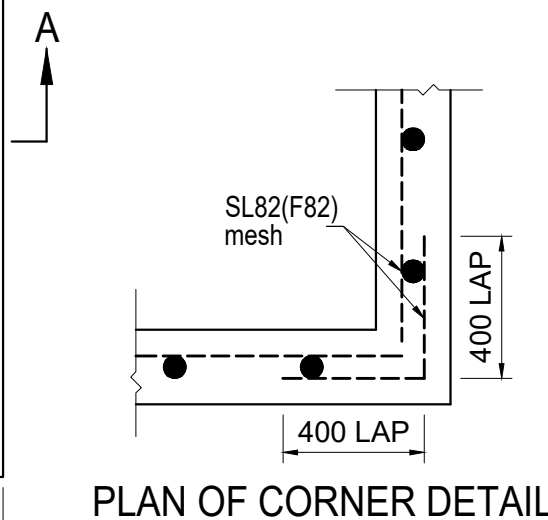
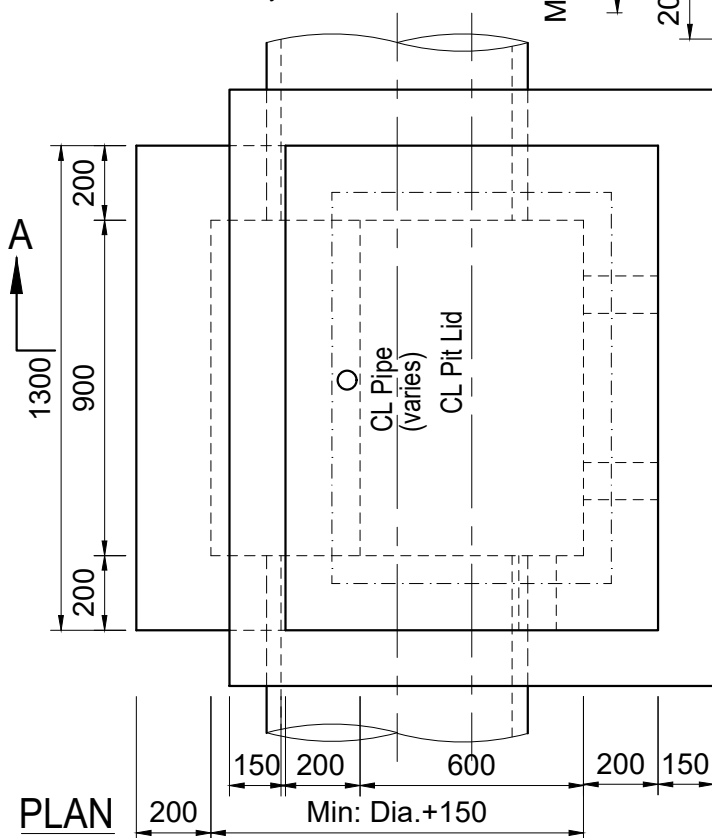


1. For depth of invert greater than 1.2m, min. wall & base thickness to be 200mm, and base to be corbelled out to 900 x 900mm minimum.
2. Min. internal pit dimension = external pipe dia. + 150mm. For pipe dia. greater than 450mm corbel pit top to a min. of 600mm.
3. SL82 reinforcing is required for pits greater than 1200 depth.
4. Class 'B' 900 x 600 Clear Opening Composite lid as per AS3996 - Junction GREEN - with embossed Frankston Logo Refer SD 207.
5. Concrete strength shall be 25MPa at 28 days.
6. Where no AG pipes exist, seal stubs with Geofabric.
7. Lock to suit AS3996 key
8. Max insert weight of 26kg
9. "Do Not Cover" to be embossed / rebated into lid
10. Pit is to be cast-in-situ only.
11. Step Irons, 230 x 230 x 20mm dia plastic coated, to be provided in pits over 900mm deep. Steps Irons to be installed on INLET wall only.



SD 231

PAGE 1 OF 1