

Pre-cast concrete lintel, SVC Lintel Code no. 15.230
(or equivalent) refer SD212 A for detail.

Throat opening 100 min.

Semi Mountable kerb SD 404
125mm - Top of kerb to invert

150 min. thickness

100mm stub
as directed

Provide 100mm dia. stubs
on both sides of pit for
AG pipe connection.

Line of inside pit wall

750

450 min

600

450

300

See Note 2

Terra Firma 1200 x
750 Fibreglass lid.
Refer SD 206 for
details.

(A grated cover may be
substituted in court
bowls when directed.)

Grout to fill 50mm
gap between pit wall
and frame.

Recast back wall of pit
if required to provide
450mm min width.

Provide 2 No.
100mm dia. stubs
as directed.

Reinforcement to be
centrally located within
wall. Laps to be 300mm min.

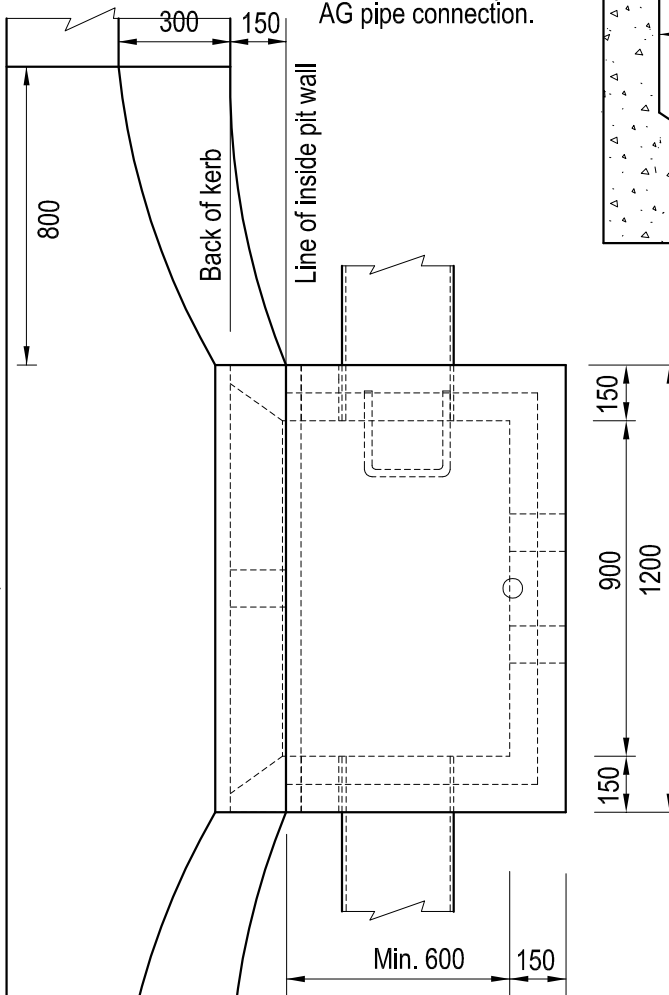
See Note 1

SECTION A-A

NOTES

1. For depth of invert greater than 1.5m, min. wall & base thickness to be 200mm, and base to be corbelled out to 900 x 900mm.
2. Min. internal pit dimension = external pipe dia. + 150mm. For pipe dia. greater than 450mm corbel pit top to a min. of 600mm.
3. SL82 reinforcing is required for pits greater than 1200 depth.
4. Pit lid to be Terra Firma fibreglass type, or approved equivalent. Refer SD 206 (In Court bowls an approved galvanised grate may be substituted.)
5. Step Irons, 230 x 230 x 20mm dia plastic coated, to be provided in pits over 900mm deep. Step Irons to be installed on INLET wall only.
6. Concrete strength shall be 25MPa at 28 days.
7. Where no AG pipes exist, seal stubs with Geofabric.

A



PLAN



SCALE: 1 : 20

DATE: Dec 2012

APPROVED:

DRAWN: S.R./P.J.D.

CHECKED: DS

INFRASTRUCTURE MANAGER

**SIDE ENTRY PIT TYPE 2
SEMI-MOUNTABLE KERB**
(125mm top of kerb to invert)

LAST AMENDED: June 2013

SD 210

PAGE 1 OF 2

