

WITTERNBERG RESERVE & ROBINSONS PARK, FRANKSTON, 3199

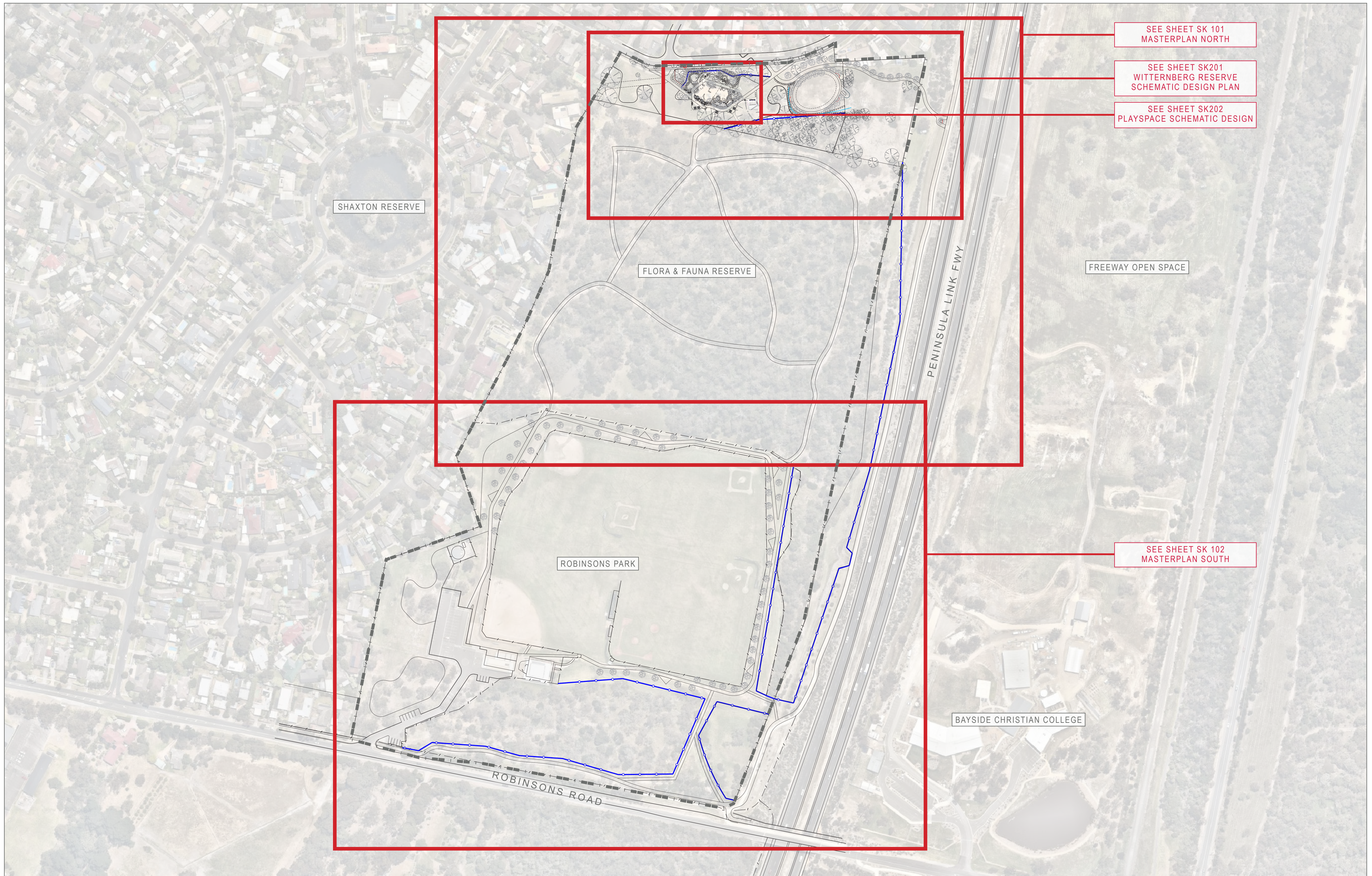
SCHEMATIC LANDSCAPE MASTERPLAN PACKAGE

REVISED IN RESPONSE TO COMMUNITY FEEDBACK NOVEMBER 2020

DRAWING INDEX

SK000	COVER SHEET
SK001	SITE PLAN
SK101	MASTERPLAN NORTH
SK102	MASTERPLAN SOUTH
SK201	WITTERNBERG RESERVE SCHEMATIC LANDSCAPE DESIGN
SK202	WITTERNBERG RESERVE PLAYSPACE CONCEPT
SK301	PLAYSPACE DESIGN PALETTE
SK401	PRELIMINARY COSTING/STAGING PLAN





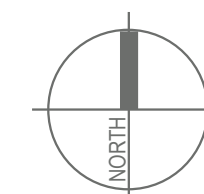
SITE IMAGE
Landscape Architects

Melbourne | Sydney



WITTERNBERG RESERVE & ROBINSONS PARK, FRANKSTON

SITE PLAN
NOT TO SCALE

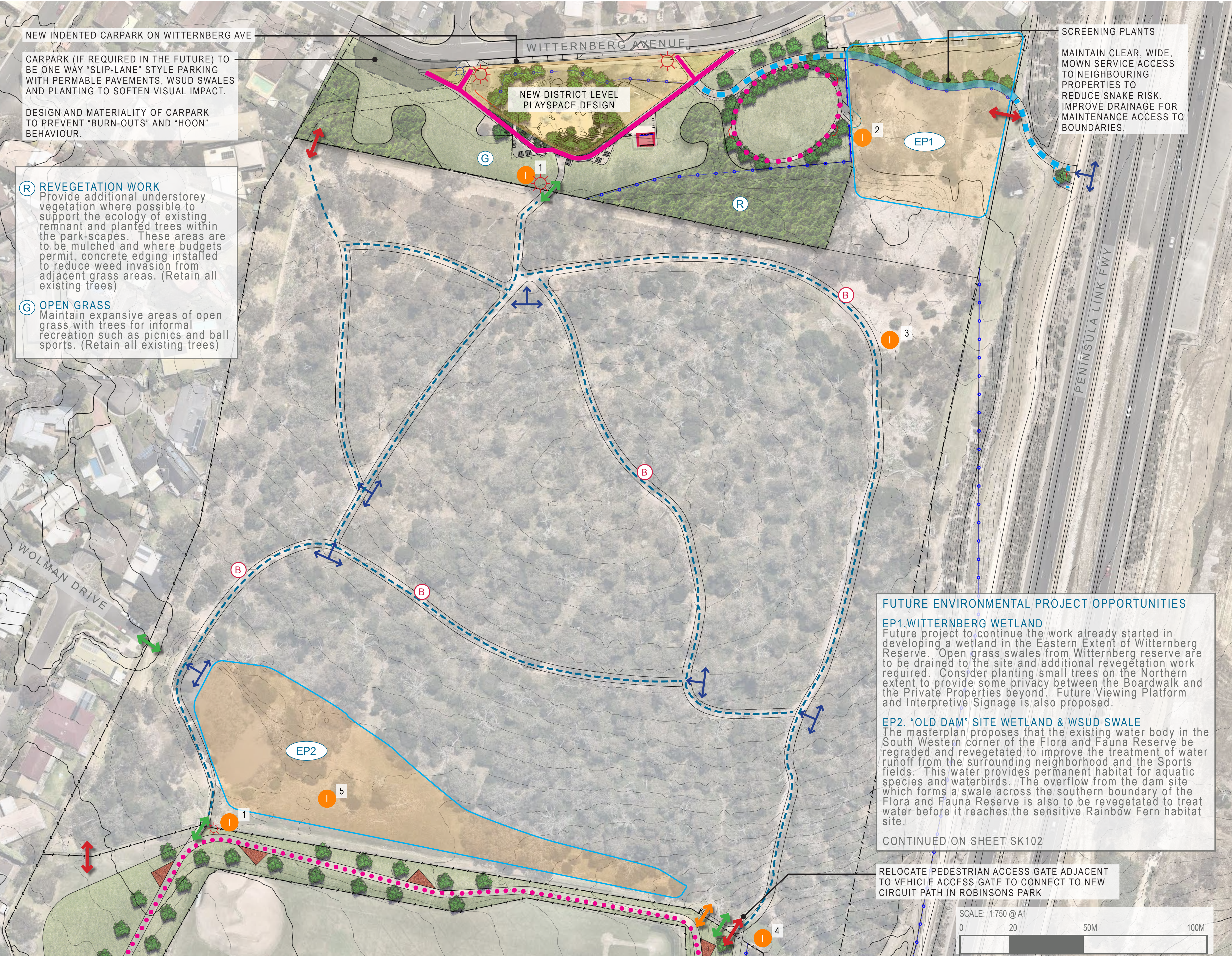


CLIENT
ARCHITECT
SITE IMAGE JOB NUMBER

FRANKSTON CITY COUNCIL
ARCH NAME
SM20372

DRAWING NUMBER
SK001
ISSUE
B
DATE
11.11.2020

Site Image Landscape Architects (VIC) 149 Drummond Street Carlton VIC 3053 Australia | T +61 3 9329 4633



SITE PLAN | NOT TO SCALE

LEGEND

ACCESS & PATHWAYS

FUTURE "FARMGATE" DESIGN
Proposed redesign of flora and fauna Reserve Gates to consider the use of a timber "kissing gate" which is large enough for prams but not motorbikes. New surface material such as crushed rock in entrances to reduce issues with mud and puddles during we weather.

EXISTING "BUSHLAND TRACK"
To retain the "natural" and "bushland" qualities of the flora and fauna reserve, it is preferred by Council to retain the "dirt path network" through the reserve. Future maintenance is to look at realignment of the path to avoid roots and other trip hazards where possible.

NEW CONCRETE ACCESS PATH
New "Broom Finish" concrete paths to access the playspace. Refer to the Schematic Design for more detail on alignment.

INFORMAL EXERCISE/CIRCUIT PATHS
Dromana Toppings Paths installed to provide a formal exercise circuit in locations shown on plan. Exercise circuit to have timber bollard distance markers for training & exercise guidance.

PROPOSED PENINSULA LINK CONNECTION PATHS (AND BOARDWALK)
The Masterplan proposes two future linkage projects to the Peninsula Link Shared Pathway. The priority is the development of the Northern Access Link through Witternberg Reserve and the Wetland site. Depending on use over time, an informal stepped pedestrian link could also be made at the South Eastern corner of Robinsons Reserve.

REMOVABLE BOLLARDS
To be installed in shared path locations which double as maintenance vehicle access point

PEST CONTROL FENCE REALIGNMENT, EXTENSION AND REPAIR
These locations are proposed to allow for the extension of the habitat area, and are subject to future funding opportunities for associated revegetation works.

MAINTENANCE ACCESS POINTS

FUTURE STEPPED PATH ACCESS LINKS TO SLOPED EXTENT OF SITE

BENCH SEAT
Proposed bench seat for quiet rest and relaxation to be sites in consultation with council environmental team

SIGNAGE PROPOSALS

MAIN PARK/RESERVE SIGNAGE
To be installed in Accordance with Council's Signage Strategy entry signage should contain key use and safety information for the public.

DIRECTIONAL / WAYFINDING SIGNAGE
Wayfinding and safety signage posts to be developed in accordance with Council's future signage strategy

INTERPRETIVE & EDUCATIONAL SIGNAGE PROJECTS
1. Flora and Fauna Reserve Vegetation and Wildlife Information
2. Wetland Ecology
3. Revegetation Project Explanation & Education
4. Rainbow Fern Ecology
5. Old dam aquatic ecology



SITE PLAN | NOT TO SCALE

LEGEND

ACCESS & PATHWAYS

FUTURE "FARMGATE" DESIGN
Proposed redesign of flora and fauna Reserve Gates to consider the use of a timber "kissing gate" which is large enough for prams but not motorbikes. New surface material such as crushed rock in entrances to reduce issues with mud and puddles during we weather.

EXISTING "BUSHLAND TRACK"
To retain the "natural" and "bushland" qualities of the flora and fauna reserve, it is preferred by Council to retain the "dirt path network through the reserve. Future maintenance is to look at realignment of the path to avoid roots and other trip hazards where possible.

INFORMAL EXERCISE/CIRCUIT PATHS
Dromana Toppings Paths installed to provide a formal exercise circuit in locations shown on plan. Exercise circuit to have timber bollard distance markers for training & exercise guidance.

EXERCISE STATIONS TO CIRCUIT PATH

MAINTENANCE ACCESS POINTS

FUTURE STEPPED PATH ACCESS LINKS TO SLOPED EXTENT OF SITE

PEST CONTROL FENCE REALIGNMENT, EXTENSION AND REPAIR
These locations are proposed to allow for the extension of the habitat area, and are subject to future funding opportunities for associated revegetation works.

SIGNAGE PROPOSALS

MAIN PARK/RESERVE SIGNAGE
To be installed in Accordance with Council's Signage Strategy entry signage should contain key use and safety information for the public.

DIRECTIONAL / WAYFINDING SIGNAGE
Wayfinding and safety signage posts to be developed in accordance with Council's future signage strategy

INTERPRETIVE & EDUCATIONAL SIGNAGE PROJECTS
1. Flora and Fauna Reserve Vegetation and Wildlife Information
2. Wetland Ecology
3. Revegetation Project Explanation & Education
4. Rainbow Fern Ecology
5. Old dam aquatic ecology

SCALE: 1:750 @ A1
0 20 50M 100M



SITE IMAGE
Landscape Architects



WITTERNBERG RESERVE & ROBINSONS PARK, FRANKSTON
SCHEMATIC MASTERPLAN - SOUTH

CLIENT
ARCHITECT
SITE IMAGE JOB NUMBER

FRANKSTON CITY COUNCIL
ARCH NAME
SM20372

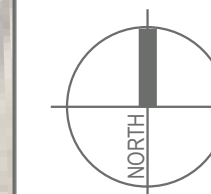
DRAWING NUMBER
ISSUE
DATE
SK102
A
22.07.2020



SITE PLAN | NOT TO SCALE

LEGEND

- ① DRY CREEKBED WITH NATIVE TREE PLANTING AND ROCKWORK
- ② ADVENTURE PLAY
ENSURE INTEGRATED SHADE STRUCTURES TO PLAY-GROUND
- ③ SOFTFALL PLAY AREA/ ZONE
- ④ EXISTING WETLAND EXTENSION
EXTEND PARK WSUD SWALE AND DRAINAGE TO EXISTING WETLAND. ADDITIONAL REVEGETATION WORKS TO WETLAND SITE
- ⑤ BBQ AND TABLE SETTING
- ⑥ WSUD SWALE
- ⑦ WETLAND LOOKOUT
- ⑧ INFORMAL MAINTENANCE AND EMERGENCY VEHICLE ACCESS
- ⑨ OPEN, LOW TEXTURE PLANTING - GRASSES, SEDGES AND GROUNDCOVERS
- ⑩ BUSHLAND REJUVENATION
- ⑪ PROPOSED SIGNAGE
- ⑫ SMALL BLUESTONE PITCHER EDGING AND STEPPERS
- ⑬ EXISTING PATH RETAINED AND SAW CUT
- ⑭ OPEN LAWN WITH SHADE TREES FOR PICNICS AND PLAY
- ⑮ ASPHALT CYCLE LINK
- ⑯ BASKETBALL RING AND SHOOTING CIRCLE
- ⑰ CONNECTING AND ENTRY PATH
- ⑱ REMOVE EX. WALL FOR AMENITIES, ADD SEMI-PERMEABLE SCREENS FOR PASSIVE SURVEILLANCE OF TOILETS
- ⑲ EXISTING GRASSES
- ⑳ LAWN DRAINAGE SWALE
- ㉑ EXISTING STREET TREES
- ㉒ SMALL SCREENING TREES BETWEEN BOARDWALK AND PRIVATE PROPERTY
- EXTENT OF WORKS
TO BE STAGED OVER TIME PENDING FUNDING



SCALE: 1:500 @ A1

0 5 10 20M 50M



SITE IMAGE
Landscape Architects

Melbourne | Sydney



WITTERNBERG RESERVE & ROBINSONS PARK, FRANKSTON

WITTERNBERG RESERVE PLAYSPACE SCHEMATIC DESIGN

CLIENT
ARCHITECT
SITE IMAGE JOB NUMBER

FRANKSTON CITY COUNCIL
ARCH NAME
SM20372

DRAWING NUMBER
ISSUE
DATE
SK201
A
22.07.2020

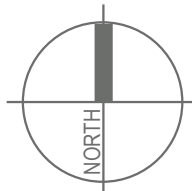
Site Image Landscape Architects (VIC) 149 Drummond Street Carlton VIC 3053 Australia | T +61 3 9329 4633



SITE PLAN | NOT TO SCALE

LEGEND

- 1 ADVENTURE PLAY
ENSURE INTEGRATED SHADE STRUCTURES TO PLAY-
GROUND (AGES 5+)
- 2 LARGE MUDSTONES
SEATS AND CLIMBING SPACE
- 3 SMALL BLUESTONE PITCHER EDGING AND
STEPPERS
- 4 DRY CREEK BED & MINIATURE FOREST
- 5 RUBBER SOFTFALL / MOUNDED SLIDE
- 6 SANDPIT PLAY
- 7 BASKETBALL RING AND SHOOTING CIRCLE
(ALL AGES)
- 8 CONNECTING AND ENTRY PATH
- 9 EXISTING PATHWAY RETAINED AND SAWCUT
- 10 TIMBER PLATFORM SEATS
- 11 BBQ
- 12 TABLE AND BENCH SETTING
- 13 FIXED BENCH SEAT
- 14 DRINKING FOUNTAIN
- 15 BINS
- 16 BIKE PARKING
- 17 EXISTING GRASSES
- 18 OPEN LAWN WITH SHADE TREES FOR
PICNICS AND PLAY
- 19 OPEN, LOW TEXTURE PLANTING -
GRASSES, SEDGES AND GROUNDCOVERS
- 20 MOUNDED BUFFER TO PLAY SPACE
- 21 PROPOSED SHADE TREE
- 22 EXISTING TREE TO BE RETAINED
- 23 REMOVE EX. WALL FOR AMENITIES, ADD
SEMI-PERMEABLE SCREENS FOR PASSIVE
SURVEILLANCE OF TOILETS X 2 EXTERNAL
SINKS
- 24 JUNIOR NATURE PLAY
(AGES 2 - 5)
- 25 EXISTING BENCH/TABLE
- 26 MULCH SOFTFALL
- 27 RUBBER SOFTFALL "STEPPERS"
- 28 PICNIC SHELTERS



SCALE: 1:100 @ A1



SITE IMAGE
Landscape Architects



WITTERNBERG RESERVE & ROBINSONS PARK, FRANKSTON
WITTERNBERG RESERVE PLAYSPACE CONCEPT

CLIENT
ARCHITECT
SITE IMAGE JOB NUMBER

FRANKSTON CITY COUNCIL
ARCH NAME
SM20372

DRAWING NUMBER
ISSUE
DATE
SK202
A
22.07.2020

THE FRANKSTON CITY COUNCIL PLAYSPACE DESIGN PALETTE

The playspace at Witternberg Reserve will build upon the success of recently completed playspaces in Frankston City Council. It is Council's intent that the playspace embrace its natural backdrop, and be developed in a subtle and natural material and colour palette to compliment the bushland beyond. It is also hoped that this playspace will offer more to a broader demographic within the community and invite teens and seniors to make the most of this amazing open space.

MATERIALS

Council have a simple material palette which ensures that playspaces are easily maintained



EDGING DETAILS

Landscape edges in playspaces are important for maintaining our parks; however they can also be interactive seating and play elements



PLAY ELEMENTS

Expand on play elements for a greater diversity of ages, including the incorporation of a basketball ring, parkour logs and seniors exercise equipment options



PARK FURNITURE

Council is working on an attractive, low maintenance furniture palette for its playspaces. This proposal will also explore options for custom recycled plastic furniture



SITE IMAGE
Landscape Architects



WITTERNBERG RESERVE & ROBINSONS PARK, FRANKSTON PLAYSPACE DESIGN PALETTE

CLIENT
ARCHITECT
SITE IMAGE JOB NUMBER

FRANKSTON CITY COUNCIL
ARCH NAME
SM20372

DRAWING NUMBER
ISSUE
DATE

SK301
A
22.07.2020