

Fire Management Statement



RINELLA RESERVE, FRANKSTON SOUTH

opportunity » growth » lifestyle

Approvals

FMS compilation	Michael Hansby, Analyst, Terramatrix.
Approved by	Jarred Stevens & Alan Wallis, Frankston City Council
Approval date	04/02/2015

Version control

Date	Comments	Distribution
29/01/2015	Draft FMS	FCC
04/02/2015	Revised FMS incorporating FCC feedback	FCC

Description

Reserve name	Rinella Reserve
Suburb	Frankston South
Perimeter roads	Rinella Court
Other road access	No other public road access.
Melway map ref	106 E1
Reserve size	1.05 ha
Reserve use	Recreation, conservation
BMO	Yes (full coverage)
BPA	Yes (full coverage)
Description	The reserve is used primarily for conservation/recreation and contains no built infrastructure. An area of remnant bushland occupies the northern portion of the reserve, with the balance existing as parkland like structure, with widely spaced trees and a heavily modified and managed grassy understorey. There are residential properties on the south-western, south-eastern and north-eastern boundaries. The northern boundary of Rinella Reserve forms the southern boundary of the Frankston Reservoir. The Reservoir is under committee of management, with the Department of Environment, Land, Water and Planning (DELWP) being the primary land owner and agency responsible for fire and emergency.
Documents - generic	<ul style="list-style-type: none">• Terramatrix (2013), Frankston City Council Natural Reserves Bushfire Management Strategy, Frankston City Council, Frankston.• Nolan, R. and Cairns, M. (2008) <i>Fire Ecology Assessment for the City of Frankston's Natural Reserves</i>. SMEC Australia Pty. Ltd., Melbourne.• Frankston City Council, (2013). <i>Natural Reserves Maintenance Manual</i>. Frankston City Council, Frankston.
Documents (reserve specific)	None
Ecological Vegetation Classes	Grassy Woodland (EVC 175) – mapped by DEPI Riparian Forest (EVC 18) – observed

Topography	Rinella Reserve lies at the southern most end of the Frankston Reservoir Reserve, and is at the head of one of the major drainage lines that form the reservoir's catchment. The topography of the site reflects its general landscape position (i.e. a gully head), with the site comprising multiple aspects and moderate slopes (less than 5 degrees) that converge at a central point in the middle of the reserve on the northern boundary.
Fire history (suspicious) Nb. Based on available data.	None
Planned burn history	None
Assets within	Bollards
Assets adjacent	Houses, Frankston Reservoir
Asset exposure	Hazard to N, SW, and NE of assets
Credible fire scenario	The most credible scenario is from a fire impacting the reserve from within the Frankston Reservoir Reserve to the north. This scenario sees a fire burning under a northerly influence up the gully and impacting the reserve and surrounding assets. Approximate 500-600 metre fire run length.

Current conditions and assessment

Community engagement

Document name	Published
Articles in local paper regarding fire safety (CFA, FCC)	As required
Social media posts regarding fire safety (CFA, FCC)	As required
FCC website	As required

Event name	Comments
CFA Fire Ready Meetings	As required
Meetings with Friends Groups	As required

Fuel management

APZ perimeter coverage	Southern and south-western perimeters
APZ width	All greater than or equal to 6 m wide
Planned burns scheduled	No set date. Burn within tolerable fire interval
Other fuel management work	Refer to FCC Maintenance Manual for reserve specific actions

The regularly mown areas within Rinella offer at least a 6m low fuel area adjacent to all private property. Much of the reserve contains a managed, grassy understorey and further separation from the reserve vegetation is provided on the private property, as the houses are set back from the boundaries.

Assessment of current fuel management	Adequate
--	----------

Access

Access at Rinella Reserve is shown on Map 1.

Assuming fire services are able to open the vehicle gate, and areas designated as providing access are maintained, then much of Rinella Reserve is accessible by both light 4x4 vehicles and tankers. While there is no formal track network within the reserve, the access provided by regular mowing of the area identified on Map 1 as 'Other Maintenance' provides ample room for light 4x4 vehicles and tankers, and as such the level of access is deemed adequate.

Assessment of current access	Adequate
Recommendations	Maintain to ensure access during fire danger period
Meeting with CFA	As needed
CFA personnel	Relevant Fire Safety Officer (FSO)

Water supply

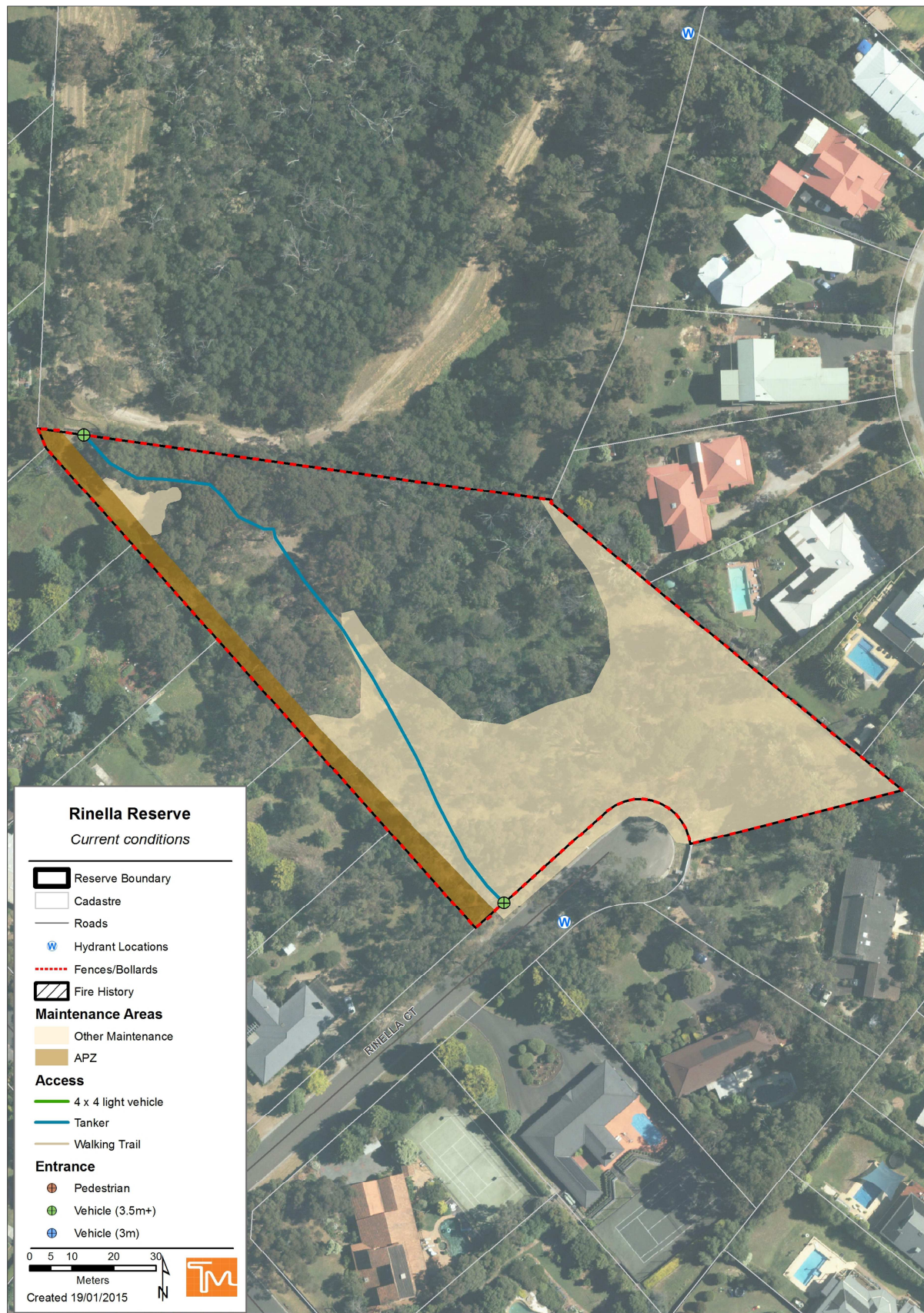
Water hydrants	There is one hydrant located in Rinella Court (adjacent to Rinella Reserve) and its location was confirmed during field inspection. (Refer Map 1)
Static supply	There are no static water points in the reserve.

Signage

There is one sign on the southern boundary of the reserve, indicating the location of emergency access. There were no signs stating fire is prohibited within the reserve.

Recommendations

Type	Action
Vegetation management	Maintain existing APZs and low fuel areas
Access	Maintain existing entrance and track (along APZ) to ensure at least light 4x4 vehicle access
Signage	Introduce a sign at the main reserve entrance stating that fires are prohibited and providing the reserve name.



Map 1 - Current conditions present at the Rinella Reserve