

# Fire Management Statement



## CASUARINA RESERVE, FRANKSTON SOUTH

opportunity » growth » lifestyle

### Approvals

<b>FMS compilation</b>	Amalie Tibbits, Manager Bushfire Analysis and Research, Terramatrix
<b>Approved by</b>	Jarred Stevens & Alan Wallis, Frankston City Council
<b>Approval date</b>	04/02/2015

### Version control

Date	Comments	Distribution
30/12/2014	Draft for comment	FCC
4/02/2015	Final FMS	FCC

### Description

<b>Reserve name</b>	Casuarina Reserve
<b>Suburb</b>	Frankston South
<b>Perimeter roads</b>	Casuarina Drive, Heritage Avenue
<b>Other road access</b>	Verbena Court
<b>Melway map ref</b>	102 F10
<b>Reserve size</b>	1.38 ha
<b>Reserve use</b>	Recreation
<b>BMO</b>	Yes (north-western half)
<b>BPA</b>	Yes (full coverage)
<b>Description</b>	The reserve is located to the east of the Frankston Reservoir, and is surrounded by residential housing. There is a playground at the southern end, near the Heritage Avenue entrance, and an information shelter about half way along the reserve, near Casuarina Avenue.
<b>Documents - generic</b>	<ul style="list-style-type: none"><li>• Terramatrix (2013), Frankston City Council Natural Reserves Bushfire Management Strategy, Frankston City Council, Frankston.</li><li>• Nolan, R. and Cairns, M. (2008) <i>Fire Ecology Assessment for the City of Frankston's Natural Reserves</i>. SMEC Australia Pty. Ltd., Melbourne.</li><li>• Frankston City Council, (2013). <i>Natural Reserves Maintenance Manual</i>. Frankston City Council, Frankston.</li></ul>
<b>Documents (reserve specific)</b>	None
<b>Ecological Vegetation Classes</b>	<ul style="list-style-type: none"><li>• Grassy Woodland (EVC 175)</li></ul>
<b>Topography</b>	The reserve slopes downhill towards the Frankston Reservoir, with a north-westerly aspect.
<b>Fire history (suspicious)</b> Nb: Based on available information, may be incomplete	None known

<b>Planned burn history</b>	None known
<b>Assets within</b>	Playground, information shelter, fences, bollards, stairs
<b>Assets adjacent</b>	Houses, roads
<b>Asset exposure</b>	Hazard to N, S, E and W of houses
<b>Credible fire scenario</b>	A local ignition on the northern or western side of the reserve, spreading towards the southern boundary under a northerly wind or the eastern boundary under a north-westerly wind.

## Current conditions and assessment

### Community engagement

<b>Document name</b>	<b>Published</b>
Articles in local paper regarding fire safety (CFA, FCC)	As required
Social media posts regarding fire safety (CFA, FCC)	As required
FCC website	As required

<b>Event name</b>	<b>Comments</b>
CFA Fire Ready Meetings	As required
Meetings with Friends Groups	As required

### Fuel management

<b>APZ perimeter coverage</b>	APZ in place for houses along the northern and eastern boundary
<b>APZ width</b>	Variable, at least 4m
<b>Planned burns scheduled</b>	No set date, burn within tolerable fire interval
<b>Other fuel management work</b>	Refer to FCC Maintenance Manual for reserve specific works

The reserve has APZs along the northern and eastern boundaries, where private properties abut the reserve and Casuarina Drive provides a fuel free break to houses to the west. Casuarina Drive may also prevent fire spread into the reserve from a fire in the Frankston Reserve. A garden bed has been constructed along the south-western boundary, against the fence lines. Although the reserve is largely mown grass in this area, the garden beds may pose a hazard if ignited. Recommend managing vegetation along the fence line to outer zone standards.

<b>Assessment of current fuel management</b>	Adequate. Maintain south-western boundary garden bed to outer zone standards.
--	---

## Access

*Access at Casuarina Reserve is shown on Map 1*

Assuming fire services are able to open all vehicle gates and tracks, and areas designated as providing access are maintained, then much of Casuarina Reserve is accessible by light 4x4 vehicles and the level of access is deemed adequate.

<b>Assessment of current access</b>	Adequate
<b>Recommendations</b>	None
<b>Meeting with CFA</b>	N/A
<b>CFA personnel</b>	N/A

## Water supply

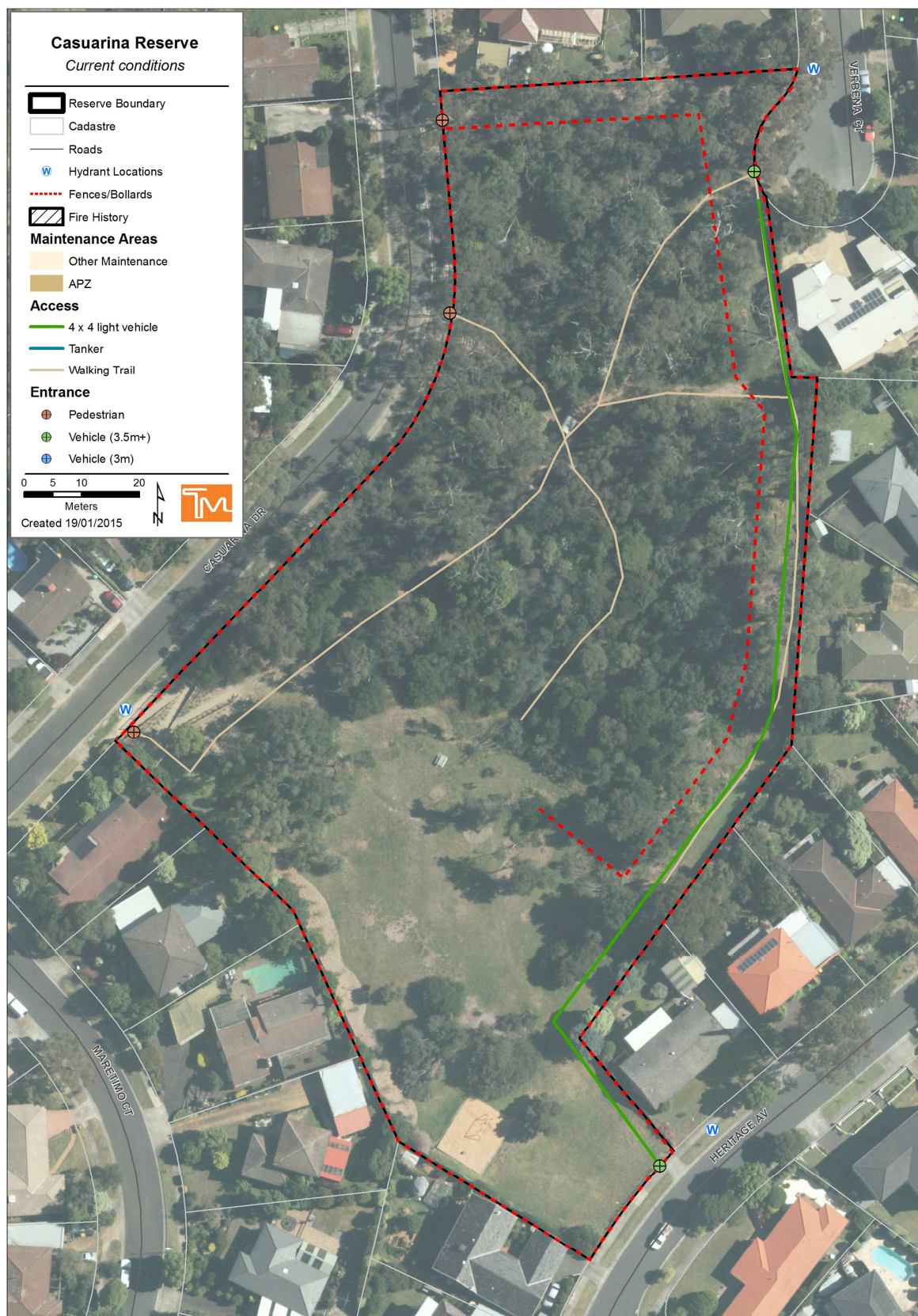
<b>Water hydrants</b>	The streets surrounding Casuarina Reserve contain numerous water hydrants. There are none within the reserve (Refer to Map 1).
<b>Static supply</b>	There are no static water supplies within the reserve.

## Signage

The main entrances to the reserve have 'no smoking signage', some of which are obscured by vegetation or graffiti.

## Recommendations

Type	Action
<b>Vegetation management</b>	Maintain existing APZs and low fuel areas. Maintain south-western boundary garden bed to outer zone standards
<b>Access</b>	Maintain existing entrances and tracks to ensure light 4x4 vehicle access
<b>Signage</b>	Consider installing 'no fires' signage at main reserve entrances. Ensure signage is readable.



Map 2 – Casuarina Reserve, current conditions