

# Fire Prevention and Preparedness



Upper Sweetwater Creek Reserve

*opportunity » growth » lifestyle*

## Description

Upper Sweetwater Reserve covers an area of 7.98 ha and borders the Frankston Reservoir. Sweetwater Creek extends north through the reserve from the reservoir in the south. The reserve is used for recreation and biodiversity conservation purposes.

## Assets at risk

- Residences
- Biodiversity

## Prevention and preparedness programs

- Mechanical fuel reduction
- Prescribed burning
- Safety patrols
- Community education
- Emergency planning
- Weed management
- Occurrence of works

## Contacts



**Frankston City Council**  
1300 322 322



**FireReady app**  
Apple and Android



**Emergency Services**  
000

## Fire history

While fires have occurred within Frankston City, there is no recent recorded history of significant unplanned bushfires within the reserve.

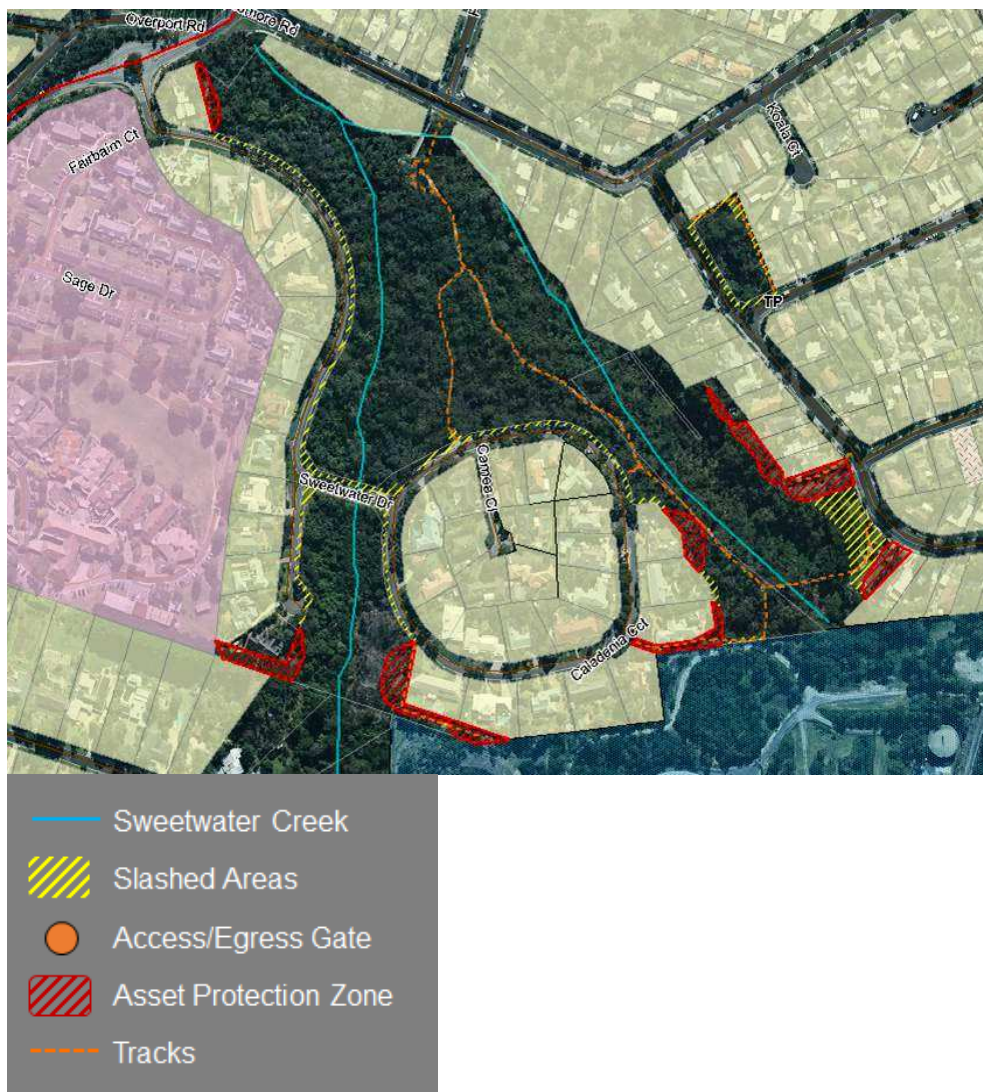
## Fire scenario

Fire may occur within the reserve as a result of local ignition or fire spread from nearby vegetation. North-westerly winds are the most likely driver for fire spread, although south-westerly winds could direct a fire from the Frankston Reservoir up into the reserve vegetation. Fire impacts are most likely to occur in the south-east of the reserve.

## Occurrence of works

November	
December	✓
January	✓
February	✓
March	

## Fire management



Map 1: Fire management at Upper Sweetwater Creek Reserve

## Example of works

Prior to the summer period



During the summer period

