

Fire Prevention and Preparedness



Lower Sweetwater Creek Reserve

opportunity » growth » lifestyle

Description

Lower Sweetwater Creek Reserve covers an area of approximately 12.95 ha, beginning near the creek's entrance to Port Phillip Bay and running inland for 1.25 km. The reserve contains an extensive network of walking tracks and boardwalks.

Assets at risk

- Residences
- Biodiversity

Prevention and preparedness programs

- Mechanical fuel reduction
- Prescribed burning
- Safety patrols
- Community education
- Emergency planning
- Weed management
- Occurrence of works

Contacts



Frankston City Council
1300 322 322



FireReady app
Apple and Android



Emergency Services
000

Fire history

While fires have occurred within Frankston City, there is no recent recorded history of unplanned bushfires within the reserve.

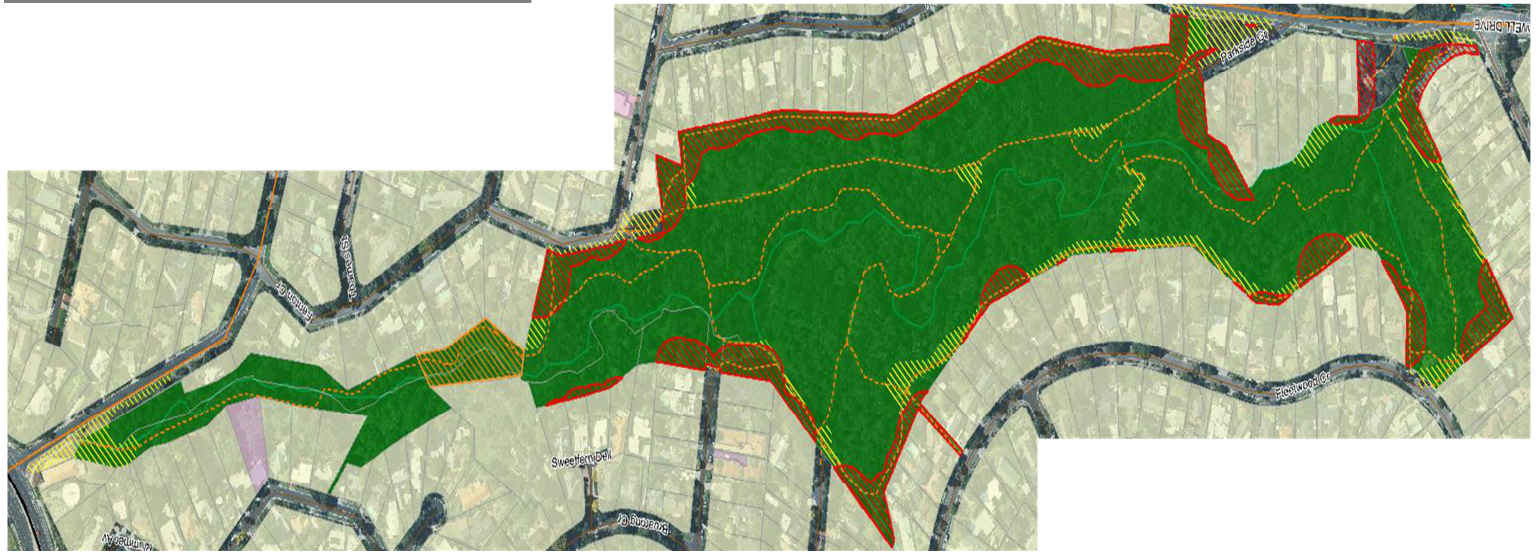
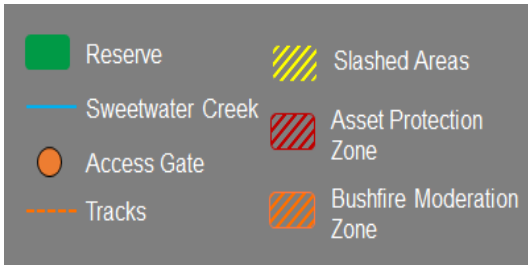
Fire scenario

It is unlikely that a bushfire would spread into the reserve from the surrounding area, as the reserve is surrounded on all sides by residential development. Fire ignition within the reserve may result from embers spotting, or local ignition. A fire within the reserve may spread from prevailing north-westerly winds towards the south-east of the reserve.

Occurrence of works

November	
December	✓
January	✓
February	✓
March	

Fire management



Map 1: Fire management at Lower Sweetwater Creek Reserve

Example of works

Prior to the summer period



During the summer period

