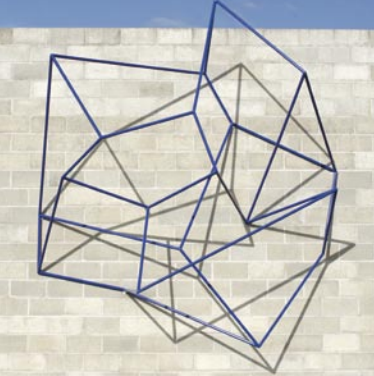




Guided Tours
for Students
and Teachers
for the McClelland
Sculpture Survey
and/or the
McClelland Gallery
Exhibitions



McClelland
Gallery+Sculpture Park



About the Guided Tours

The McClelland+Sculpture Park's guided tours are a valuable resource for students and teachers. The guided tours address the Victorian Essential Learning Standards (VELS) underpinning Curricula at primary and secondary levels. In learning about the materials, techniques, principles and conventions used by different artists and exploring and responding to the concepts in each exhibition, students:

- gain an understanding of the processes of creating and making art;
- become familiar with the Gallery as a space of exploration and discovery;
- learn the vocabulary used in interpreting artworks and
- gain a broader understanding of community and cultures beyond their own.

The tours can be tailored to link with Curriculum at tertiary level by focusing on more complex discourses in art, cross-referencing when appropriate, with literature, philosophy, history and science. Guided tours are tailored to suit your requirements and are conducted by qualified and experienced guides.

Planning Your Visit

Timing

Tours must be booked two weeks in advance. Refer to the "Reservation Request" booking form.

Cost

Entry to the Gallery is by donation.

A donation of \$2 per person for the guided tours is recommended.

Dates and Times

Wednesday 11am and 2pm
Thursday 11am and 2pm

Available throughout the year.
Advance bookings essential.

Tour Options

Refer to the information at the back of this flyer.

Special Requests

Discuss your special needs with Silvia Krambeck, Public Programs Coordinator on (03) 9789 1671
Monday – Friday 9am to 5pm.

Art Cart Tours

Maximum 5 seats available for each tour. Priority given to visitors with mobility issues.
Advance bookings essential.

Top left: **Robert Owen** *Double Vision No. 2* 2003 steel, paint

Top right: **W. B McInnes** *Portrait of Harry McClelland (Drum-major Harry McClelland)* c1929 oil on canvas



McClelland Sculpture Survey and Award

18 November 2007 –
6 July 2008

Since its inception, in 2003, the McClelland Sculpture Survey & McClelland Award has emerged as the most important biennial outdoor sculpture exhibition in Australia. This is one of the richest sculpture awards in Australia displaying a wide range of works in different media and styles by both established and emerging artists.

Sculptors nationally and internationally are eligible to enter the McClelland Sculpture Survey, an exhibition highlighting the diversity and invention of contemporary sculptural practice.

The 30+ sculptors will be selected to participate in the McClelland Sculpture Survey.

Displayed throughout 16 hectares of bush and landscaped gardens, the McClelland Sculpture Survey gives sculptors the opportunity to present their works in an outdoor exhibition context. The exhibition is accompanied by a major comprehensive catalogue.

Artists selected are also eligible for the McClelland Award 2007, an acquisitive award valued at A\$100,000. The McClelland Award 2007 will be judged by Chris Saines, Director, Auckland Art Gallery Toi o Tamaki, New Zealand.

Sculpture Park Guided Tours

Wednesday	11am and 2pm
Thursday	11am and 2pm
Saturday*	11am and 3pm
Sunday*	11am and 3pm

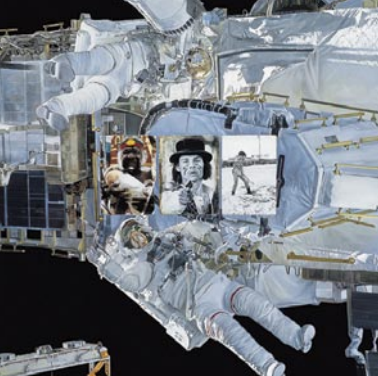
* available only for the external Survey exhibition.

Please meet your McClelland Guide outside the Gallery.

Top left: **Darren Davison** *homespace* 2005 stainless steel, wood, plastic, acrylic
Top right: **Lisa Roet** *White ape* 2005 coated fibreglass, Corten steel base
Right: **Phil Price** *Ratytus* 2005 kinetic: marine grade stainless steel, aerospace carbon fibres, epoxy, bearings

Cover top: McClelland Gallery + Sculpture Park
Left to right: **David Wadelton** *Star crazy* 2002 oil on canvas
Pat Brassington *The frog* 1997 pigmented print
Anthony Pryor *Sea Legend* 1991–2000 fabricated bronze





Choose Your Tour

The McClelland guided tours combine learning and fun while helping to meet your curriculum standards.

You may choose from the following guided tours offered on the days and times printed overleaf. These tours vary in length and depth of focus depending on your requirements:

1 My First Visit to the Gallery: A Brief Introduction

30 to 45 minutes

2 Explore the forms, materials and techniques used by modern and contemporary sculptors to represent the world around them. *1 hour*

3 Decode the main themes, explore the concepts and interpret the symbols and imagery used by the artists in the indoor and/or outdoor exhibitions. *1 hour*

4 Teachers' Preview

By appointment only

For information on a wide range of programs open to the general public, visit www.mcclellandgallery.com

For detailed information please contact Silvia Krambeck, Public Programs Coordinator on 03 9789 1671.

Group Sizes

For your own enjoyment it is suggested that group sizes be no larger than 20 students. Larger groups must visit separately or split in smaller groups. During high traffic periods and special Gallery events, large groups may not be accommodated in the indoor galleries. Please discuss your requirements with the Gallery.

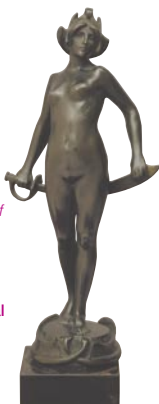
How to Reach Us

The McClelland Gallery+Sculpture Park is located at 390 McClelland Drive, Langwarrin 3910. Melway Reference 103 E3.

This is one hour's drive from Melbourne and 4 km east from the Frankston Railway Station where taxis are plentiful.

Ample parking for school buses is available on the grounds.

Top left: **Lyndell Brown/ Charles Green** *The map of Atlantis* 2004 oil on linen
 Top right: **Sam Jinks** *The hanging man* 2005 mixed media
 Right: **Bertram MacKennial** *Salome* c1897 bronze



Reservation Request

To book your guided tour please fill in this form and:

- Fax it to (03) 9789 1610 or
- Mail it to Silvia Krambeck, Public Programs Coordinator, McClelland Gallery+Sculpture Park, 390 McClelland Drive, Langwarrin 3910 or

- Download it from www.mcclellandgallery.com fill in the information and email it to silvia.krambeck@mcclellandgallery.com

Requests must be submitted at least two weeks prior to your visit's date. A letter will be faxed or emailed to you confirming your guided tour date and time.

Today's Date

Name of Teacher/s

School Name

School Address

School Telephone No.

School Fax No.

Teacher's Email Address

Lunch at the McClelland Gallery Café

Yes No

Would you like us to fax you a copy of the menu?

Yes No



Right: **Hermann Hohaus** *Deer and fawn*
1971 cast bronze



1st Reservation

First Choice – Guided Tour

Date Time

Type of Tour/Program

2nd Choice – Guided Tour

Date Time

Type of Tour/Program

Grade Level

Average Age of Students

Number of Students Number of Supervisors

Special Needs

2nd Reservation

First Choice – Guided Tour

Date Time

Type of Tour/Program

2nd Choice – Guided Tour

Date Time

Type of Tour/Program

Grade Level

Average Age of Students

Number of Students Number of Supervisors

Special Needs

Please email, fax or mail your reservation two weeks prior to your visit.

McClelland Gallery+Sculpture Park

390 McClelland Drive

Langwarrin, Victoria 3910

T +613 9789 1671 F +613 9789 1610

www.mcclellandgallery.com

silvia.krambeck@mcclellandgallery.com

